



GO EDUCATE

Striving to narrow the gap and provide equal opportunities and educational outcomes for all ages and key stages.

A team led by professionals with backgrounds in children's residential care and educational settings.



Department
for Education

Qualified
teacher status

DBS (formerly CRB)
CHECKED
Disclosure and Barring Service



48 Park Street Brighthouse

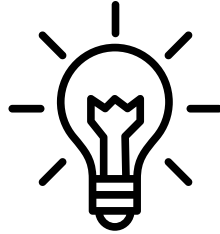
Tel: 01484 716284 Mob: 07584907481

Why work with us?



Under Your Umbrella

Sessions that build upon learner's prior knowledge and experiences



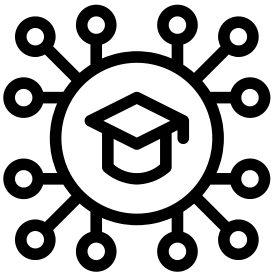
Progress Led Learning

Interactive and engaging teaching that is tracked, purposeful and evidence led



Unlocking Potential

High expectations and a pedagogy that encourages resilience, confidence, interpersonal skills and self-belief



Expert Experience

Experienced practitioners who cater for all learner needs and personal circumstances



Powerful Partnerships

Familiarity with multi-agency approach and liaison with other stakeholders



Evidence Based

EEF: "A wide breadth of skills, expertise proves small group/1:1 accelerates progress"



Department
for Education

Qualified
teacher status

DBS (formerly CRB)
CHECKED
Disclosure and Barring Service



48 Park Street Brighthouse

Tel: 01484 716284 Mob: 07584907481

Our Services

- 1:1 home visits to support those who are unable to access in-school provision.
- Group intervention either within your school setting or at our offices in Brighouse, Halifax or Ripponden.
- Interactive carousel learning for PPA provision (photography, coding, STEM, media studies and more).

We also offer accredited courses, including (but not limited to):

- Business
- ICT
- Digital Media
- Entry Level Science
- Core subjects across all ages and Key Stages





Enlightened Minds

At GoEducate, we believe that every learner deserves a chance to thrive. Our school services are tailored to empower students, foster a love for learning, and pave the way for a bright future. Explore our offerings below:



Enlightened Minds

Tuition Packages: At GoEducate, we understand that each student has unique learning needs. Our tuition packages are crafted to provide personalised support, helping students grasp challenging concepts and excel in their academic journey.

Daytime Placement for Those Out of Setting: For students who are currently without a school placement, GoEducate offers daytime placements to bridge the educational gap. Our supportive environment fosters learning, encouraging students to re-engage with their studies and regain a sense of routine.

Support for Vulnerable Learners: We are committed to creating a safe and nurturing space for vulnerable learners. Our teachers are experienced in supporting learners with a wide range of SEN.

Students Unable to Access School: GoEducate recognises that certain circumstances may prevent students from physically accessing traditional school settings. We provide alternative arrangements to facilitate learning for those unable to attend school in person in a range of locations that we can use to ensure maximum impact for student success.



Department
for Education

Qualified
teacher status

DBS (formerly CRB)
CHECKED
Disclosure and Barring Service



48 Park Street Brighthouse

Tel: 01484 716284 Mob: 07584907481

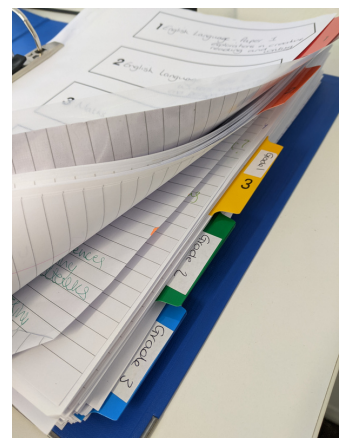
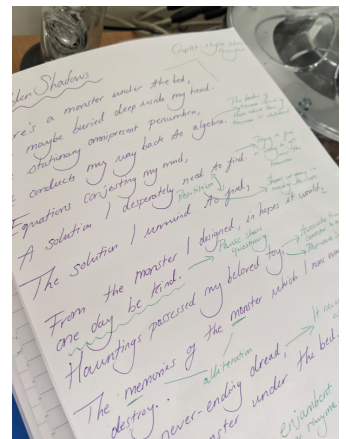
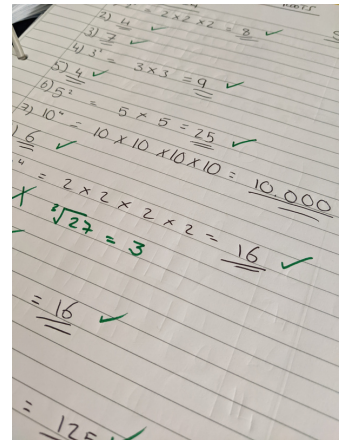


Looked After Children: We understand the unique needs of looked after children and are committed to providing a supportive and enriching educational experience. Our services aim to create a positive learning environment that promotes stability and helps looked after children reach their full academic potential.

Online Sessions: In today's digital age, we offer online learning sessions (where appropriate) for those who prefer or require remote access to education. Our virtual classrooms provide an interactive and engaging learning experience, ensuring that students can participate in lessons from the comfort of their own space.

Alternative Provision for Re Engagement: For learners who may benefit from alternative provision, GoEducate offers specialised programs to re-engage them in education. Our alternative provision services are designed to address the specific needs of each student, providing a pathway to success and future reintegration into mainstream education.

Tracking & Data: We work hard to track and assess our learners in line with their age related outcomes; this is done via spreadsheets, skills audits, and completion of folder work. After our initial assessment has determined the academic strengths and areas for development we work towards delivering and mark regular summative and formative assessments for our students based on their progress with us.



Department
for Education

Qualified
teacher status

DBS (formerly CRB)
CHECKED
Disclosure and Barring Service



48 Park Street Brighthouse

Tel: 01484 716284 Mob: 07584907481

Enlightened Minds Testimonies

This period [with Enlightened Minds] has been the most settled they have been in education for a long time.

Carer Testimonial

They have helped me lots in maths because I used to struggle lots in maths and they push you to get past your struggles and help you get lots. Even though some days I don't want to get out of bed I have fun when I am here and learn something new each day.

Student Testimonial

They definitely try to push you to your full ability. All of my work is specialised to me. Coming to GoEd is better to learn because they think about you as a person and your mindset.

Student Testimonial



Department
for Education

Qualified
teacher status

DBS (formerly CRB)
CHECKED
Disclosure and Barring Service



48 Park Street Brighthouse

Tel: 01484 716284 Mob: 07584907481

Our Spaces



Page Brighthouse

Our home base. From our offices in Brighthouse we can support learners on a one to one or small group basis. All of our offices are equipped with ICT technology and are small, comfortable, welcoming spaces for children to learn in; considering sensory and additional needs.

The Nook Brighthouse

Our classroom setting. In The Nook learners are able to work together in groups and learn in a collaborative way. From here we run a number of our accredited courses in a friendly, open-plan space.



Page Ripponden

Our cosy space. In the heart of beautiful Ripponden, we support a large number of our private families, SEN learners and school-linked students. Welcoming children from Year 1 to Year 13 and beyond.



Department
for Education

Qualified
teacher status

DBS (formerly CRB)
CHECKED
Disclosure and Barring Service



48 Park Street Brighthouse

Tel: 01484 716284 Mob: 07584907481

Staff Testimonies



One of the most rewarding things I have done in my career is working with specialist provisions to allow young people to access opportunities and qualifications that would have previously been far out of their reach.

**Paul Ellis - Senior Manager of Educational Provision,
Development & Strategy
Brighthouse**

Working with William Henry Smith school we have been able to deliver Science and Media courses with 100% pass rate and 100% enjoyment rate, making it a success for everyone involved.

**Guy Farrow - Go Educate Tutor
Brighthouse**



The progress that students make within our provision really is incredible. I have been so proud to be a part of the incredible SATs result achieved by our partners at St Andrew's Junior School this year.

**Amy Jackson - GoEducate Tutor and Educational Partnerships
Development Manager
Brighthouse and Ripponden**



Department
for Education

Qualified
teacher status

DBS (formerly CRB)
CHECKED
Disclosure and Barring Service



48 Park Street Brighthouse

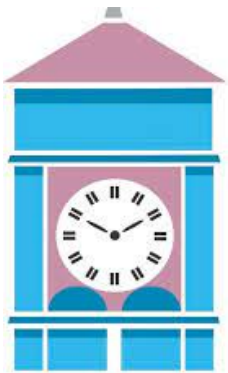
Tel: 01484 716284 Mob: 07584907481

School Testimonies

It has been an absolute pleasure to work with Amy over the past year. She is incredibly organised and knowledgeable in a number of subjects. Amy creates tuition plans and lessons to suit the needs of our pupils and is always kind, patient and friendly. The children enjoy their lessons and have made significant progress.



Louise Haley - Year 6 Teacher
St Andrew's Junior School



William
Henry
Smith
School

I appreciate the flexibility, enthusiasm and support you and your staff have offered throughout the year in all the subjects. I'm sure you will agree, we have developed a really great working relationship.

Karl Adamski - Senior Staff
The William Henry Smith School

Emma has played a pivotal role in rebuilding our school's ethos and mindset towards academic achievement and behaviour and attitudes. She was vital in securing Outstanding for behaviour and attitudes and personal development of the students. Currently English in our school has the highest qualification rate for functional skills and GCSE. She has really created a safe haven for our students to aspire and achieve great things and is also an incredible part of our special little team.



Michael Rayner - Head Teacher
Compass Community Schools



Department
for Education

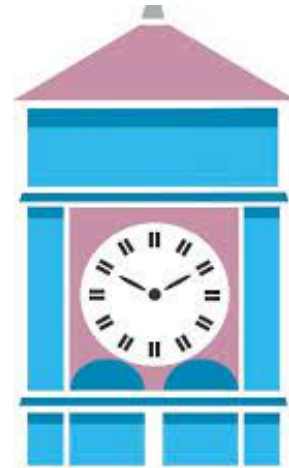
Qualified
teacher status

DBS (formerly CRB)
CHECKED
Disclosure and Barring Service





With thanks to our current partners



William
Henry
Smith
School

Whitcliffe Mount School 



Department
for Education

Qualified
teacher status

DBS (formerly CRB)
CHECKED
Disclosure and Barring Service



48 Park Street Brighouse
Tel: 01484 716284 Mob: 07584907481